



**Trussing & Staging**



La filosofia di UNIRIG è improntata alla qualità ed affidabilità dei propri prodotti. I nostri tecnici scelgono i migliori materiali costruttivi nella maniera più oculata. Allo stesso modo l'attenzione è rivolta alla cura dei particolari e delle finiture, ai test e ai controlli di qualità rigorosi.

In questo spirito di crescita continua a favore della qualità e competitività, si sviluppa il nuovo catalogo dei TRALICCI IN ALLUMINIO TRABES.

Al suo interno potrete trovare la risposta alle vostre esigenze grazie a soluzioni tecniche innovative e specifiche, nate da decenni di confronto con il mercato e di dialogo franco e aperto con i suoi protagonisti.

*UNIRIG's philosophy is based on the quality and on the reliability of its products. The company's technicians choose the best materials in the most sharp-sighted way. In the same way they focus their attention on details and products finishing. Tests and quality controls are rigorous.*

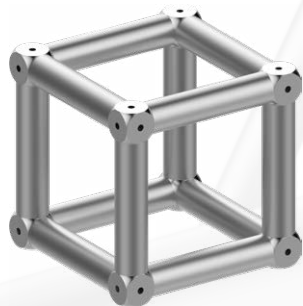
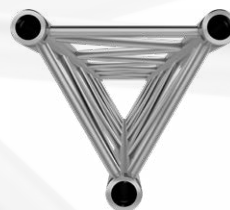
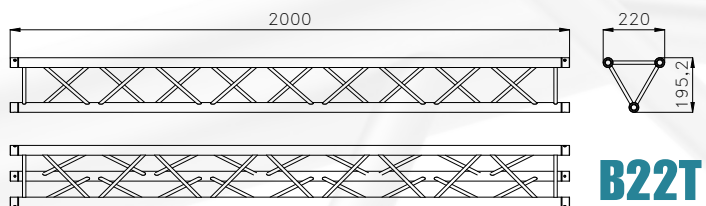
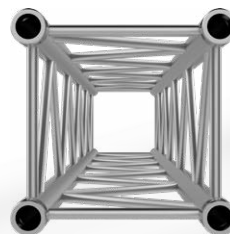
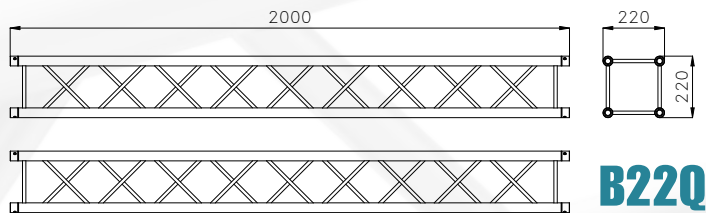
*This is the spirit of our constant improvement which aims at competitiveness and high quality. All these elements led us to the development of the new catalogue of TRABES ALUMINIUM TRUSSES.*

*Inside our new catalogue you can find the answer to your needs thanks to innovative and specific solutions, which are the result of decades spent working on the entertainment market, side by side with our customers from whom we have learnt how to always provide the right solutions.*

# B22

## Traliccio in alluminio con boccola, lato 22 cm

*Aluminium truss  
with bushing, 22 cm side*



## Cubo di giunzione, lato 22 cm *22 cm Side Corner Box*

### Informazioni Tecniche

Tubi correnti  $\varnothing$  35x2 mm  
Diagonali  $\varnothing$  12x1,5 mm

### Sistema di giunzione

Giunti in alluminio e spine  
coniche con copiglie

### Finitura

Alluminio naturale o  
verniciatura personalizzata

### Applicazioni

Ideale per installazioni fisse,  
negozi e strutture di piccole  
dimensioni

### Technical Information

Main tubes  $\varnothing$  35x2 mm  
Diagonals  $\varnothing$  12x1,5 mm

### Connection system

Aluminium spigots and  
conical pins with "R" clips

### Finishing

Natural aluminium or  
customized painting

### Applications

Ideal for fixed installations,  
showrooms and small  
structures

# C22Q 8

# B30

## Informazioni Tecniche

Tubi correnti  $\varnothing$  50x2 mm  
Diagonali  $\varnothing$  20x2 mm

## Sistema di giunzione

Giunti in alluminio e spine coniche con copiglie

## Finitura

Alluminio naturale o verniciatura personalizzata

## Applicazioni

Ideale per installazioni fisse, allestimenti fieristici, studi televisivi, strutture per lo spettacolo

## Disponibile nella versione HEAVY DUTY con

Tubi correnti  $\varnothing$  50x3 mm  
Diagonali  $\varnothing$  20x2 mm

## Technical Information

Main tubes  $\varnothing$  50x2 mm  
Diagonals  $\varnothing$  20x2 mm

## Connection system

Aluminium spigots and conical pins with "R" clips

## Finishing

Natural aluminium or customized painting

## Applications

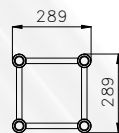
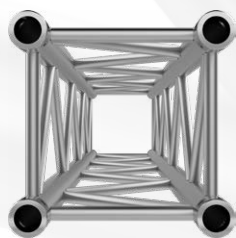
Ideal for fixed installations, exhibitions, studios, entertainment truss systems

## Available in HEAVY DUTY version with

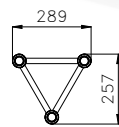
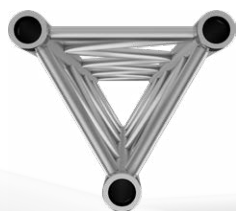
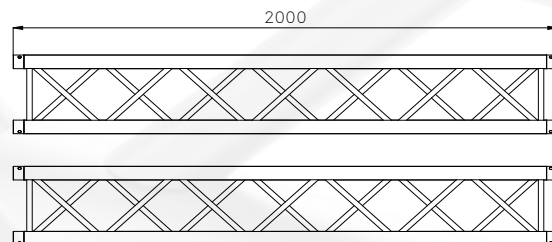
Main tubes  $\varnothing$  50x3 mm  
Diagonals  $\varnothing$  20x2 mm

## Traliccio in alluminio con boccola, lato 29 cm

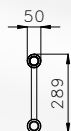
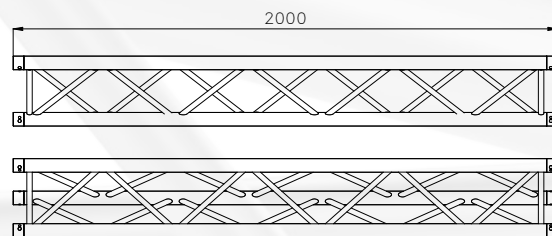
## Aluminium truss with bushing, 29 cm side



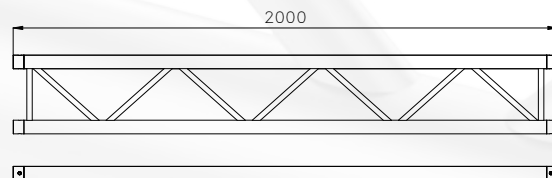
**B30Q**



**B30T**

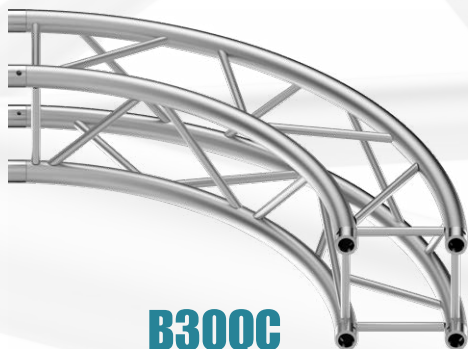


**B30L**

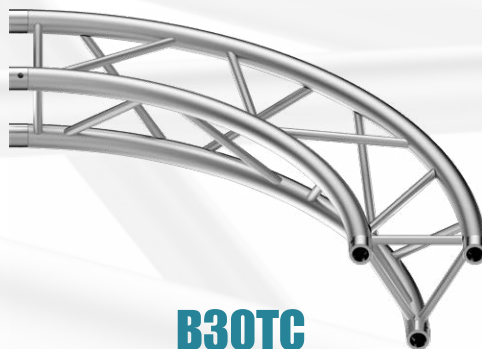


**Cerchio in alluminio  
con boccola, lato 29 cm**  
*Aluminium circle  
with bushing, 29 cm side*

**B30 C**



**B30QC**



**B30TC**



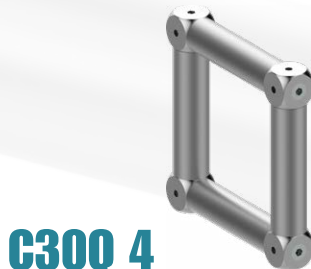
**B30LC**

**Cubo di giunzione, lato 29 cm**  
*29 cm Side Corner Box*

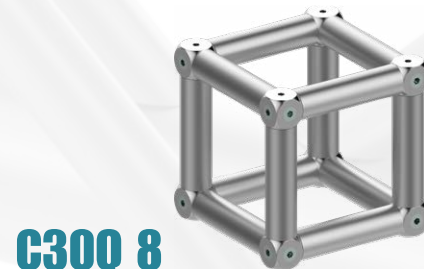
**C30**



**C30L 2**



**C30Q 4**



**C30Q 8**

# B40

## Informazioni Tecniche

### B40Q - B40L

Tubi correnti Ø 50x2 mm

Diagonali Ø 20x2 mm

## Sistema di giunzione

Giunti in alluminio e spine coniche con copiglie

## Finitura

Alluminio naturale o verniciatura personalizzata

## Applicazioni

Ideale per installazioni fisse, allestimenti fieristici, studi televisivi, strutture per lo spettacolo

## Technical Information

### B40Q - B40L

Main tubes Ø 50x2 mm

Diagonals Ø 20x2 mm

## Connection system

Aluminium spigots and conical pins with "R" clips

## Finishing

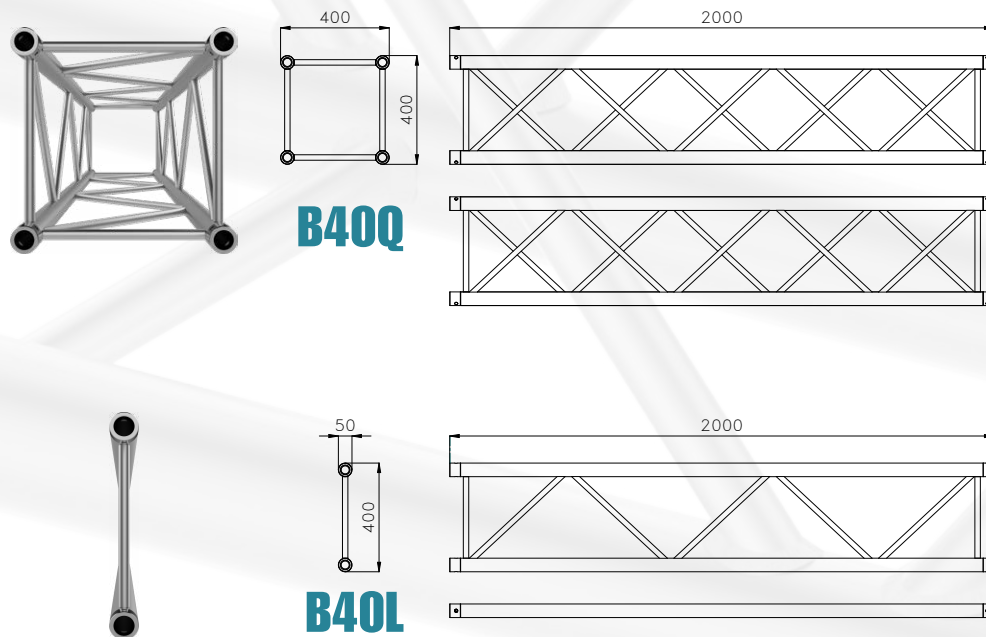
Natural aluminium or customized painting

## Applications

Ideal for fixed installations, exhibitions, studios, entertainment truss systems

## Traliccio in alluminio con boccola, lato 40 cm

### Aluminium truss with bushing, 40 cm side



# B40

## Informazioni Tecniche

### B40I - B40QH - B40R

Tubi correnti  $\varnothing 50 \times 3$  mm

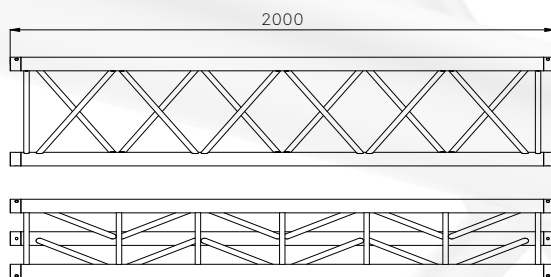
Diagonali  $\varnothing 20 \times 2$  mm

## Technical Information

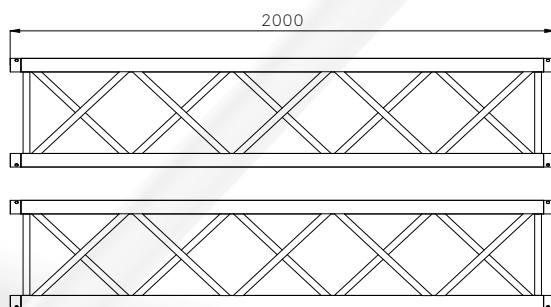
### B40I - B40QH - B40R

Main tubes  $\varnothing 50 \times 3$  mm

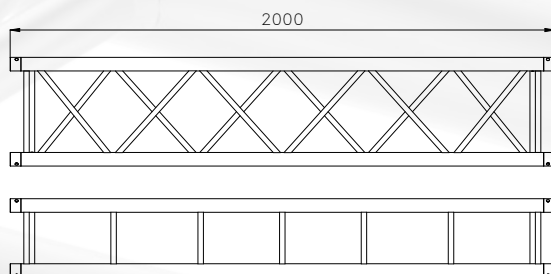
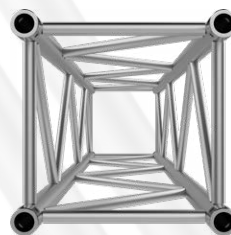
Diagonals  $\varnothing 20 \times 2$  mm



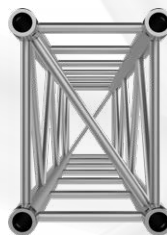
**B40I**



**B40QH**



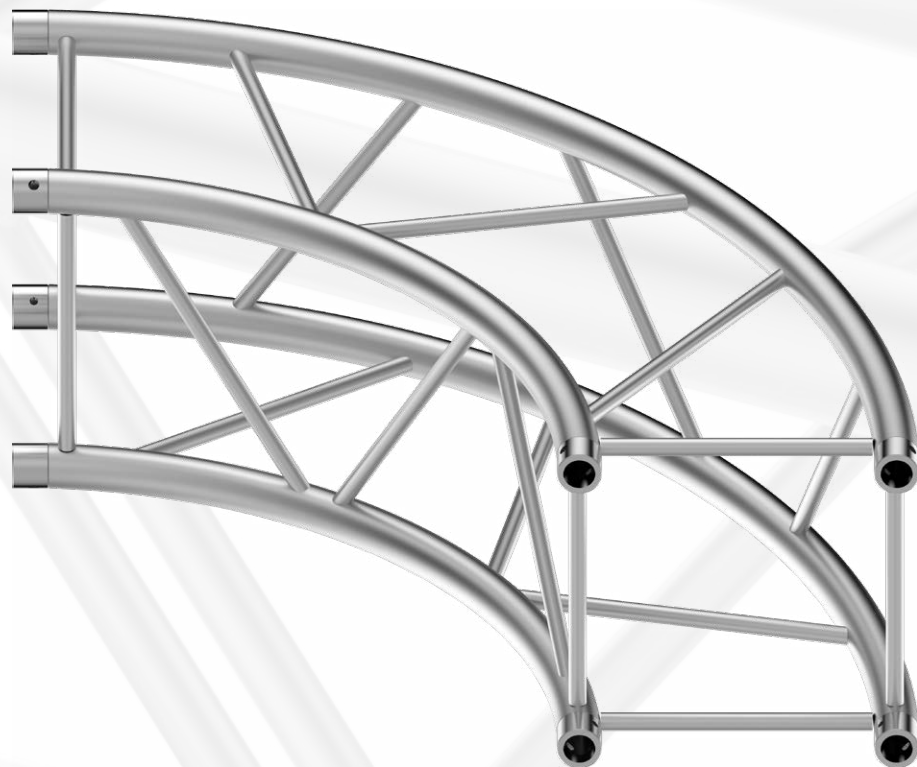
**B40R**



# B40 C

**Cerchio in alluminio  
con boccola, lato 40 cm**

*Aluminium circle  
with bushing, 40cm side*

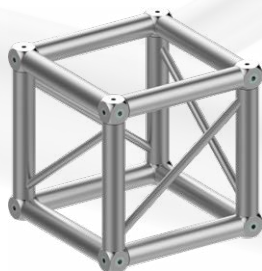


# C40

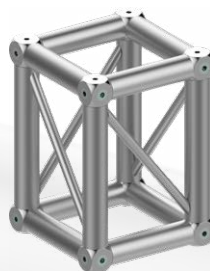
**Cubo di giunzione, lato 40 cm**  
*40 cm side Corner Box*



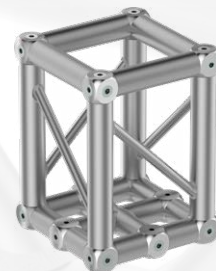
**C40Q 4**



**C40Q 8**



**C40R 8**



**C40R 12**

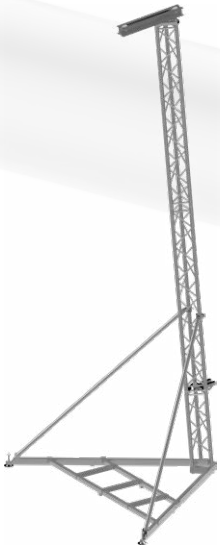


# Torri in alluminio per sospensione sistemi audio

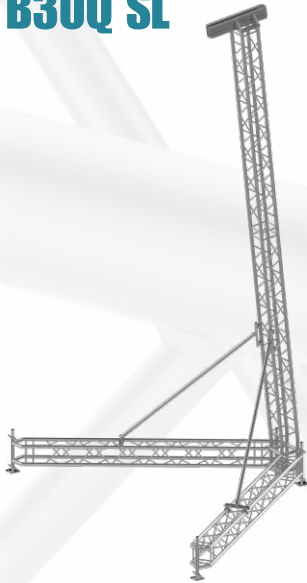
*Aluminium Towers for audio system*

# B30-40 SL

## B30T SL



## B30Q SL



## B40Q SL



### Informazioni Tecniche

Tubi correnti  $\varnothing$  50x2 mm  
Diagonali  $\varnothing$  20x2 mm

**Prodotto disponibile  
nella versione P30 e P40.**

### Capacità di carico

B30T SL -> 300 kg  
B30Q SL -> 550 kg  
B40Q SL -> 900 kg

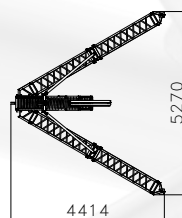
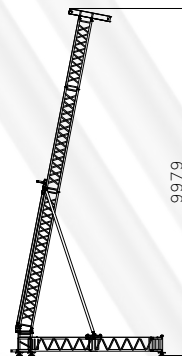
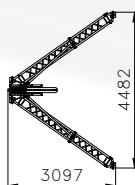
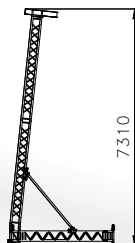
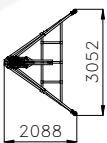
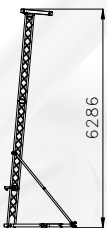
### Technical Information

Main tubes  $\varnothing$  50x2 mm  
Diagonals  $\varnothing$  20x2 mm

**Available in  
P30 and P40 version**

### Loading capacity

B30T SL -> 300 kg  
B30Q SL -> 550 kg  
B40Q SL -> 900 kg



# P25

## Informazioni Tecniche

Tubi correnti  $\varnothing$  50x2 mm  
Diagonali  $\varnothing$  12x1,5 mm

## Doppio Sistema di giunzione

Giunti in alluminio e spine coniche con copiglie, in alternativa viti e dadi M8

## Finitura

Alluminio naturale o verniciatura personalizzata

## Applicazioni

Ideale per installazioni fisse, allestimenti fieristici, studi televisivi

## Technical Information

Main tubes  $\varnothing$  50x2 mm  
Diagonals  $\varnothing$  12x1,5 mm

## Double Connection system

Aluminium spigots and conical pins with "R" clips, or bolt and M8 nuts

## Finishing

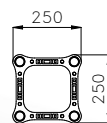
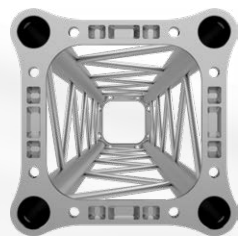
Natural aluminium or customized painting

## Applications

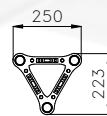
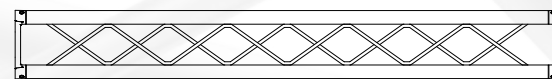
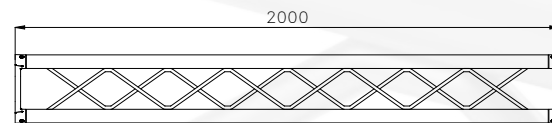
Ideal for fixed installations, exhibitions, studios

## Traliccio in alluminio con piastra, lato 25 cm

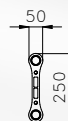
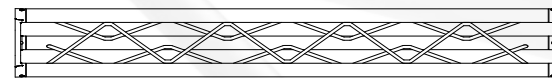
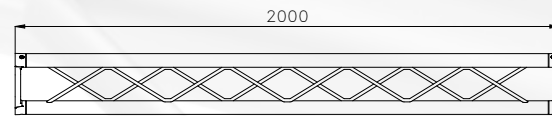
### Aluminium truss with end plate, 25 cm side



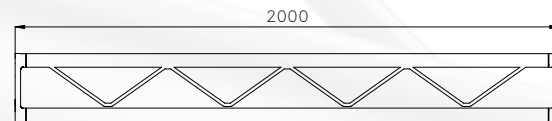
P25Q



P25T



P25L



**Cerchio in alluminio  
con piastra, lato 25 cm**

*Aluminium circle  
with end plate, 25 cm side*

**P25 C**



**P25QC**



**P25TC**



**P25LC**

**Cubo di giunzione, lato 25 cm  
25 cm side Corner Box**

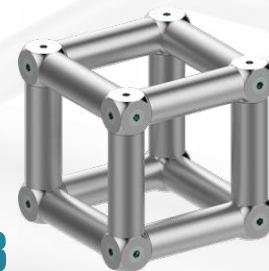
**C25**



**C25L 2**



**C25Q 4**



**C25Q 8**

# P30

## Informazioni Tecniche

Tubi correnti  $\varnothing$  50x2 mm  
Diagonali  $\varnothing$  18x2 mm

## Doppio Sistema di giunzione

Giunti in alluminio e spine coniche con copiglie, in alternativa viti e dadi M10

## Finitura

Alluminio naturale o verniciatura personalizzata

## Applicazioni

Ideale per installazioni fisse, allestimenti fieristici, studi televisivi, strutture per lo spettacolo

## Disponibile nella versione HEAVY DUTY con

Tubi correnti  $\varnothing$  50x3 mm  
Diagonali  $\varnothing$  20x2 mm

## Technical Information

Main tubes  $\varnothing$  50x2 mm  
Diagonals  $\varnothing$  18x2 mm

## Double Connection system

Aluminium spigots and conical pins with "R" clips, or bolt and M10 nuts

## Finishing

Natural aluminium or customized painting

## Applications

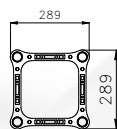
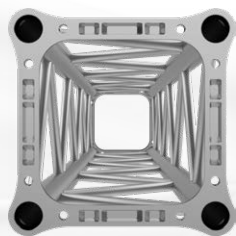
Ideal for fixed installations, exhibitions, studios, entertainment truss systems

## Available in HEAVY DUTY version with

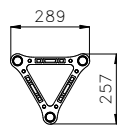
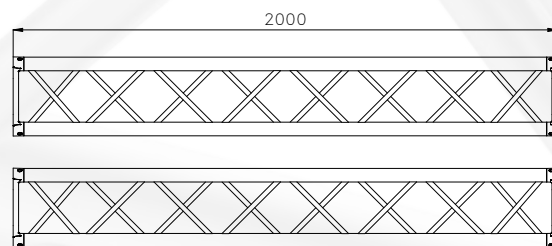
Main tubes  $\varnothing$  50x3 mm  
Diagonals  $\varnothing$  20x2 mm

## Traliccio in alluminio con piastra, lato 29 cm

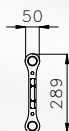
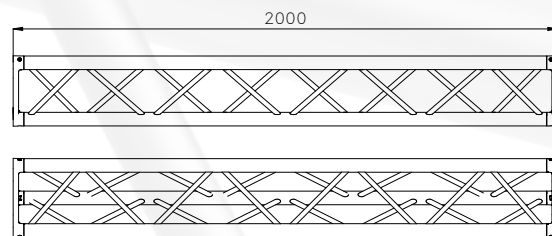
## Aluminium truss with end plate, 29 cm side



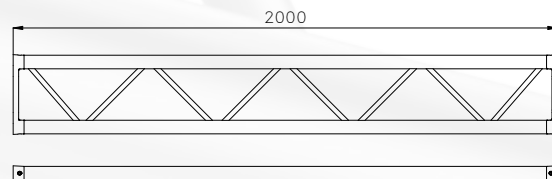
P30Q



P30T



P30L



**Cerchio in alluminio  
con piastra, lato 29 cm**

*Aluminium circle  
with end plate, 29 cm side*

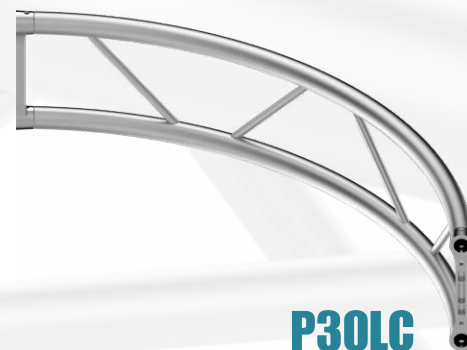
**P30 C**



**P30QC**



**P30TC**



**P30LC**

**Cubo di giunzione, lato 29 cm**  
*29 cm Side Corner Box*

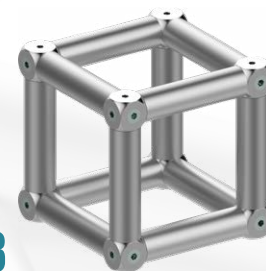
**C30**



**C30L 2**



**C30Q 4**



**C30Q 8**

# P40

## Informazioni Tecniche

Tubi correnti  $\varnothing$  50x2 mm  
Diagonali  $\varnothing$  20x2 mm

## Doppio Sistema di giunzione

Giunti in alluminio e spine coniche con copiglie, in alternativa viti e dadi M10

## Finitura

Alluminio naturale o verniciatura personalizzata

## Applicazioni

Ideale per installazioni fisse, allestimenti fieristici, studi televisivi, strutture per lo spettacolo

## Disponibile nella versione HEAVY DUTY con

Tubi correnti  $\varnothing$  50x3 mm  
Diagonali  $\varnothing$  25x2 mm

## Technical Information

Main tubes  $\varnothing$  50x2 mm  
Diagonals  $\varnothing$  20x2 mm

## Double Connection system

Aluminium spigots and conical pins with "R" clips, or bolt and M10 nuts

## Finishing

Natural aluminium or customized painting

## Applications

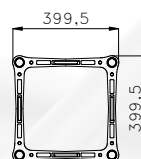
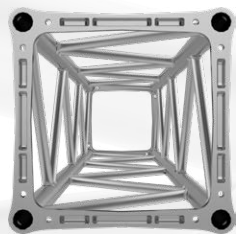
Ideal for fixed installations, exhibitions, studios, entertainment truss systems

## Available in HEAVY DUTY version with

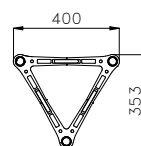
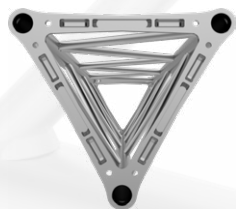
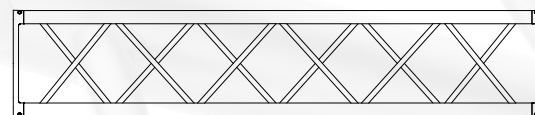
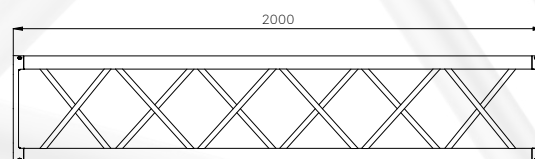
Main tubes  $\varnothing$  50x3 mm  
Diagonals  $\varnothing$  25x2 mm

## Traliccio in alluminio con piastra, lato 40 cm

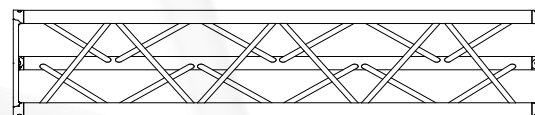
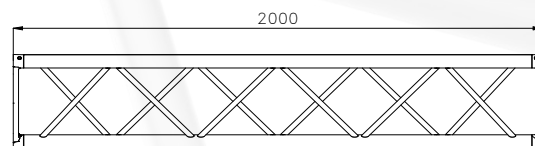
## Aluminium truss with end plate, 40 cm side



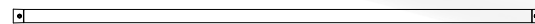
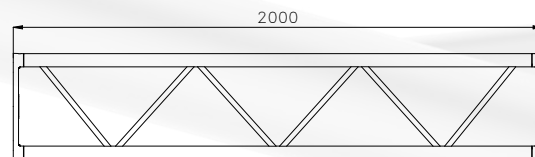
P40Q



P40T



P40L



**Cerchio in alluminio  
con piastra, lato 40 cm**

*Aluminium circle  
with end plate, 40 cm side*

**P40 C**



**P40QC**



**P40TC**



**P40LC**

**Cubo di giunzione, lato 40 cm**  
*40 cm Side Corner Box*

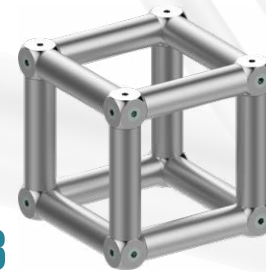
**C40**



**C40L 2**



**C40Q 4**



**C40Q 8**

# F40-60

## Informazioni Tecniche

### F40Q - F60R

Tubi correnti Ø 50x4 mm

Diagonali Ø 30x3 mm

### Sistema di giunzione

Connessione a forca, spine con copiglie

### Finitura

Alluminio naturale o verniciatura personalizzata

### Applicazioni

Ideale per allestimenti in cui si richiedono capacità di carico elevate

## Technical Information

### F40Q - F60R

Main tubes Ø 50x4 mm

Diagonals Ø 30x3 mm

### Connection system

Fork connection, pins with "R" clips

### Finishing

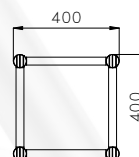
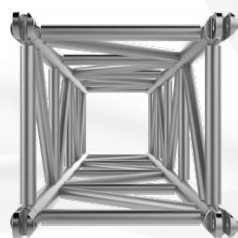
Natural aluminium or customized painting

### Applications

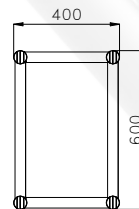
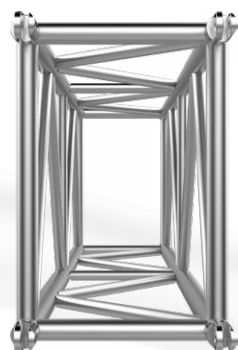
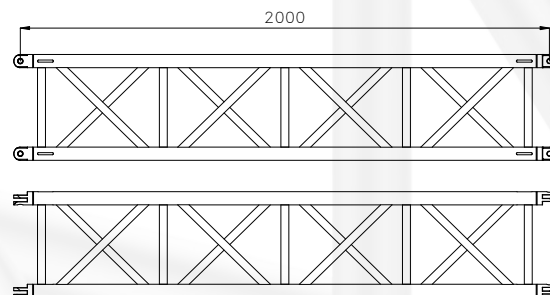
Ideal for high load capacity installations

## Traliccio in alluminio con connessione a forca

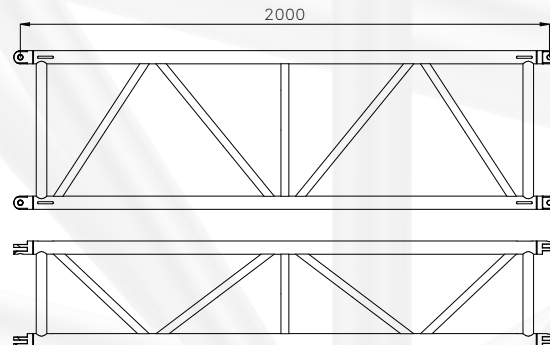
### Aluminium truss with fork connection



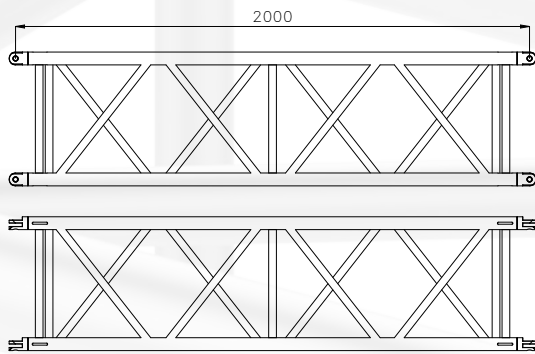
**F40Q**



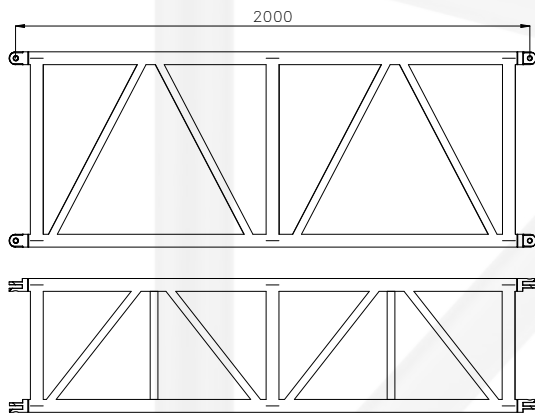
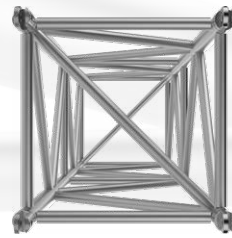
**F60R**



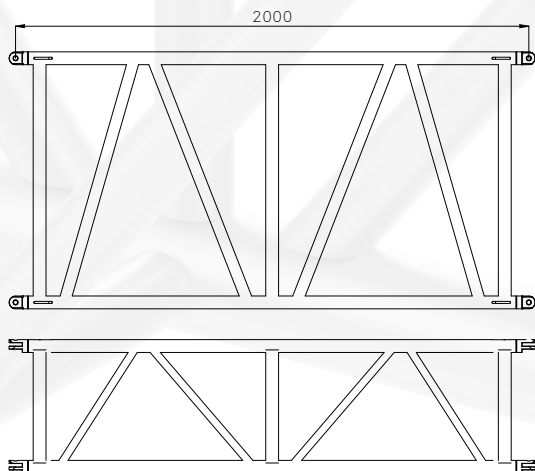
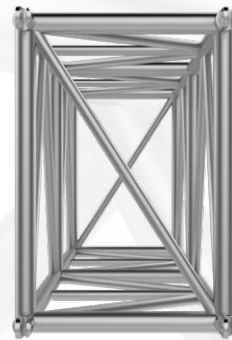




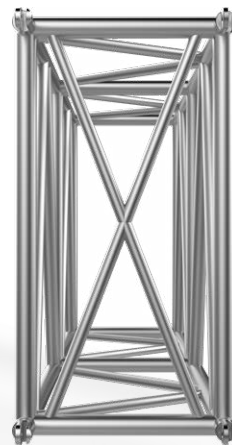
**F52Q**



**F76R**



**F100R**



# F52-100

## Informazioni Tecniche

### F52Q - F76R

Tubi correnti  $\varnothing$  50x4 mm  
Diagonali  $\varnothing$  30x3 mm

### F100R

Tubi correnti  $\varnothing$  60x5 mm  
Diagonali  $\varnothing$  50x4 - 50x3 mm

## Technical Information

### F52Q - F76R

Main tubes  $\varnothing$  50x4 mm  
Diagonals  $\varnothing$  30x3 mm

### F100R

Main tubes  $\varnothing$  60x5 mm  
Diagonals  $\varnothing$  50x4 - 50x3 mm

# P30Q T

**Torre in alluminio lato 29 cm**  
*Aluminium tower, 29 cm side*

## Informazioni Tecniche

Tubi correnti  $\varnothing$  50x2 mm  
Diagonali  $\varnothing$  18x2 mm

## Doppio Sistema di giunzione

Giunti in alluminio e spine coniche con copiglie, in alternativa viti e dadi M10

## Finitura

Alluminio naturale o verniciatura personalizzata

## Applicazioni

Ideale per installazioni fisse, allestimenti fieristici, studi televisivi, strutture per lo spettacolo

## Disponibile nella versione HEAVY DUTY con

Tubi correnti  $\varnothing$  50x3 mm  
Diagonali  $\varnothing$  20x2 mm

## Prodotto disponibile nella versione B30Q

## Technical Information

Main tubes  $\varnothing$  50x2 mm  
Diagonals  $\varnothing$  18x2 mm

## Double Connection system

Aluminium spigots and conical pins with "R" clips, or bolt and M10 nuts

## Finishing

Natural aluminium or customized painting

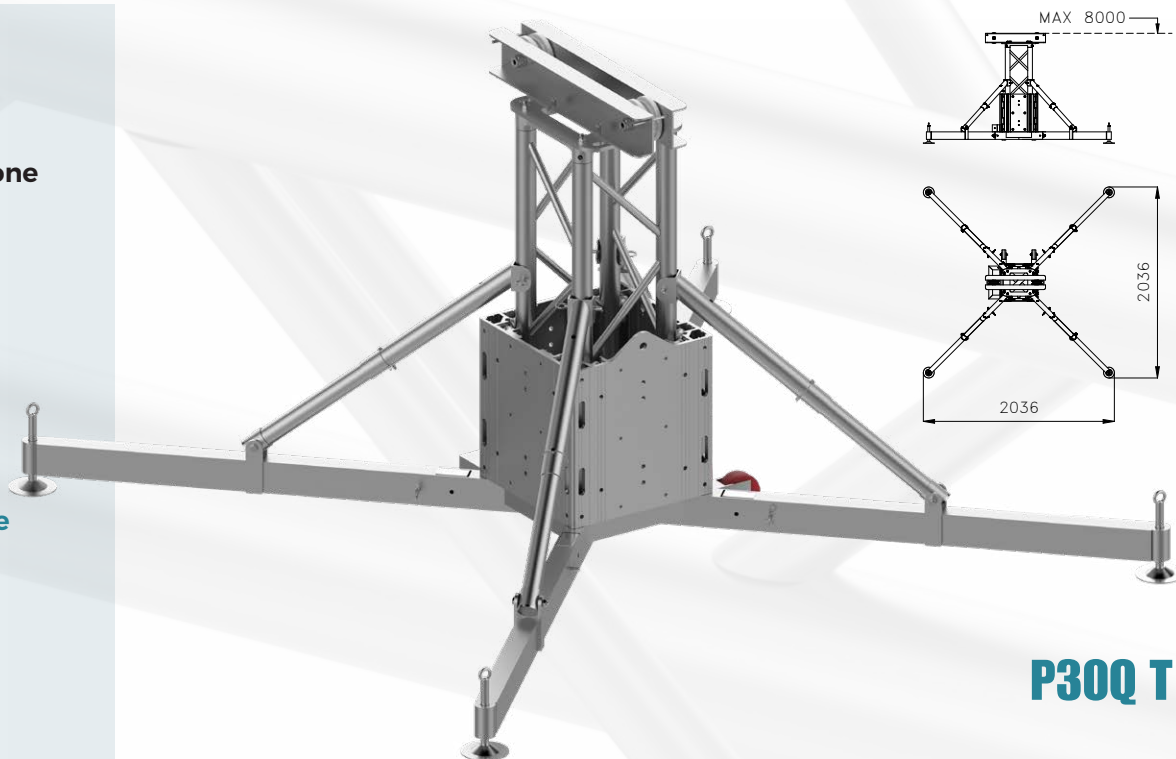
## Applications

Ideal for fixed installations, exhibitions, studios, entertainment truss systems

## Available in HEAVY DUTY version with

Main tubes  $\varnothing$  50x3 mm  
Diagonals  $\varnothing$  20x2 mm

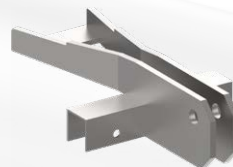
## Available in B30Q



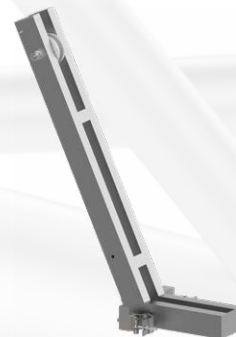
**P30Q T**



**T30Q W**



**T30Q CS**



**T30Q KL**



**T30Q J**

**Torri in alluminio lato 40 cm**  
*Aluminium tower, 40 cm side*

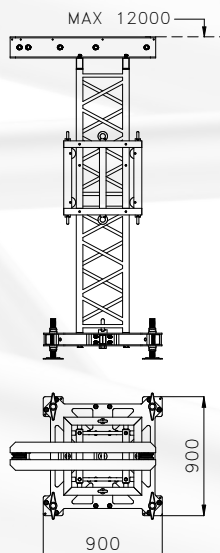
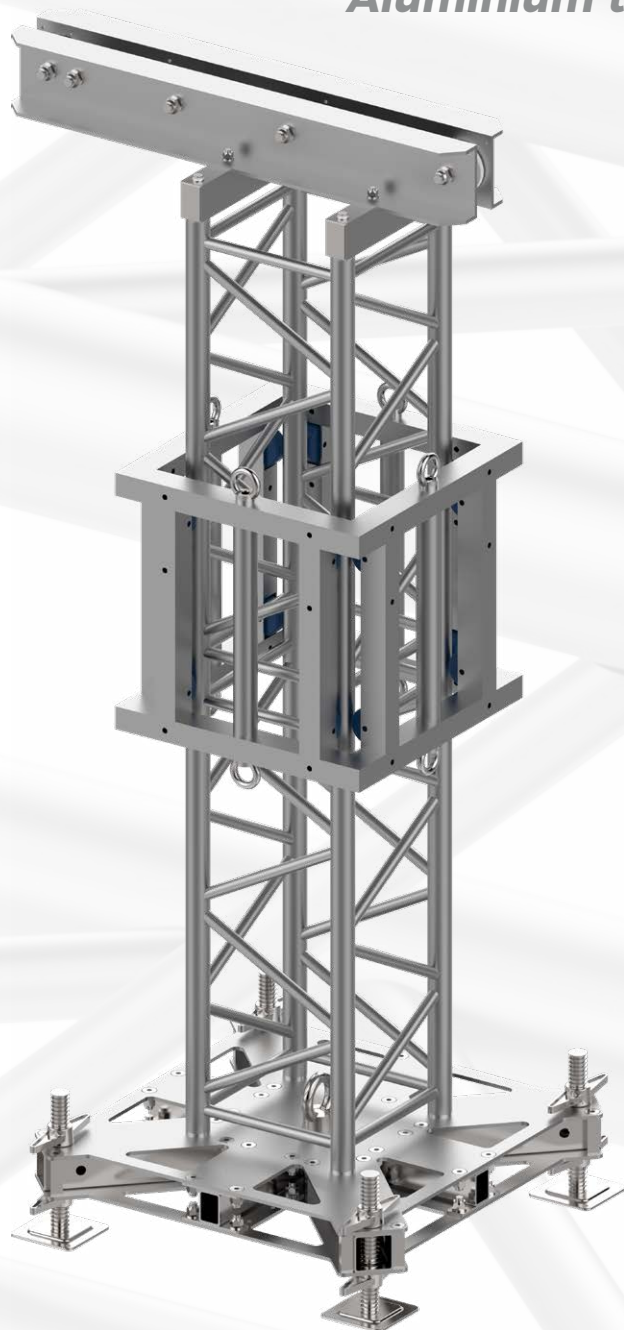
# T40Q

**Informazioni Tecniche**

Compatibile con tralici  
serie F40Q - P40Q - B40Q

**Technical Information**

Compatible with  
F40Q - P40Q - B40Q series



**T40Q T**



**T40Q HS**



**T40Q CS**

# F52

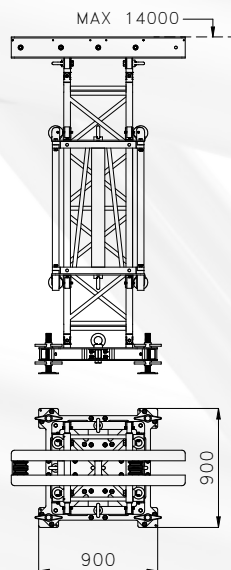
## Torri in alluminio lato 52 cm *Aluminium tower, 52 cm side*

### Informazioni Tecniche

Compatibile con tralicci  
serie F52Q - F40Q

### Technical Information

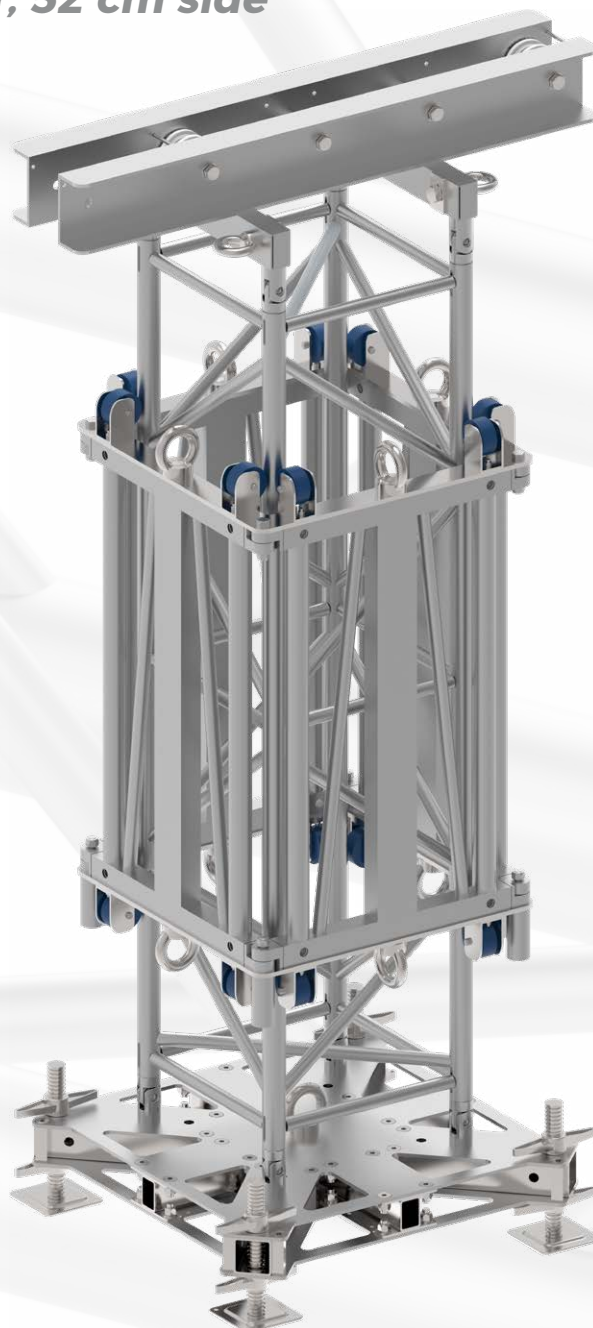
Compatible with  
F52Q - F40Q series



## F52 T



## F52 HS

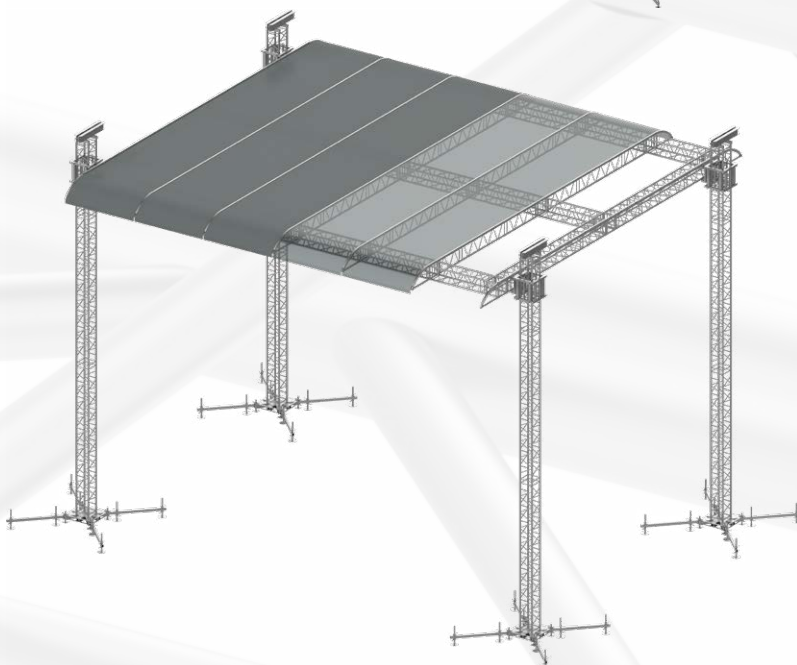


## Coperture in alluminio modulari e standard

*Aluminium roofs system,  
standard and modular versions*



**R40S**



**R40M**

# R40

### **Informazioni Tecniche**

Le coperture nascono con il doppio scopo di creare un riparo confortevole per i professionisti dello spettacolo contro gli effetti degli agenti atmosferici e fornire una struttura utile a sostenere ed ospitare al meglio l'equipaggiamento indispensabile per l'organizzazione di eventi e spettacoli all'aperto.

Le strutture sono complete di telo in PVC e degli accessori necessari al montaggio.

Quasi tutti gli elementi utilizzati sono parte del catalogo standard e quindi possono essere usati anche per altri tipi di applicazione. Ogni struttura è corredata da manuale di montaggio e relativa certificazione.

### **Technical Information**

*The Roofs Systems has two aims: being a comfortable shelter for showbiz professionals during the exposure to atmospheric agents, and providing the users with a useful structure to keep open air events equipment safe. Almost all the components used to assemble a roof system are part of the standard production and can be therefore used to assemble other structures. We provide the customers with PVC sheets and all the necessary accessories for the assembly process. Each roofs system comes with an assembly manual and certification.*

## Accessori per tralicci

*Trusses  
Accessories*

Prodotto disponibile  
in colore nero.

*Available in black color*



**C100**



**C101**



**C201**



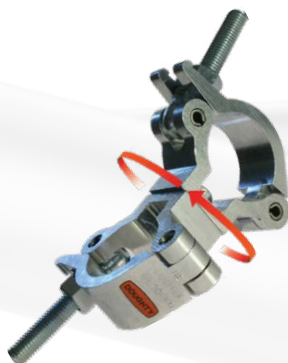
**C301**



**C301 E**



**C301 S**



**C302**



**C501**



**C501 E**



**C501 S**



**C502**



**C750**



**C750 E**



**C750 S**



**KC1**



**UTS1**



**TS 25-30-40**



**LF1-2**

## Accessori per tralicci

*Trusses  
Accessories*

Prodotto disponibile  
in colore nero.

*Available in black color*

## Palco Modulare *Stage Deck*

### Informazioni Tecniche

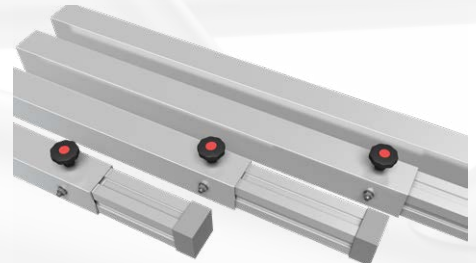
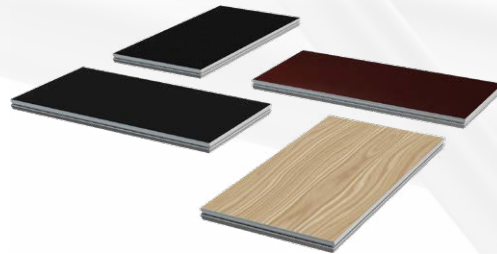
Il palco modulare in alluminio combina: forza, durata, stabilità, leggerezza e flessibilità totale.

Una vasta gamma di accessori, permette di realizzare combinazioni più disparate nell'allestimento, piena versatilità in un unico prodotto.

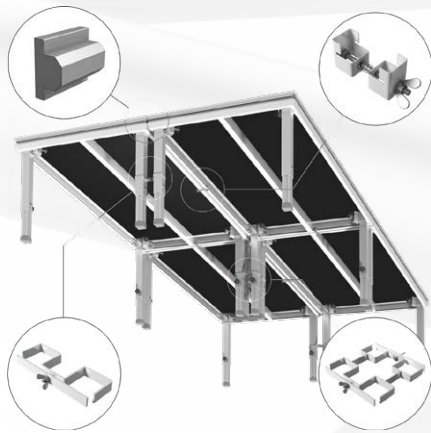
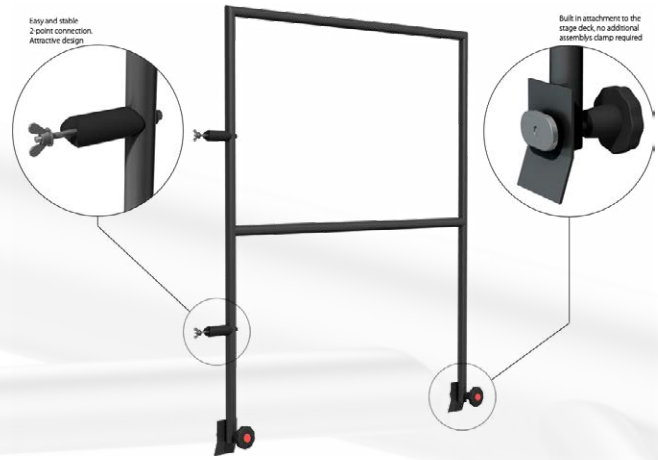
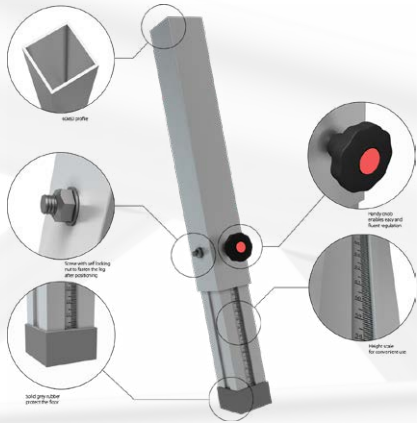
### Technical Information

*The aluminium modular stage combines: strength, durability, stability, lightness and total flexibility.*

*A wide range of accessories, allows you to create different combinations in the preparation, full versatility in a single product.*







# B110

## Barriere Antipanico in alluminio Aluminium Crowd Barriers

### Informazioni Tecniche

La barriera antipanico PLUS è un'evoluzione della serie standard.

La larghezza di ciascun modulo è di 1.10 m il che significa un risparmio di moduli a parità di lunghezza perimetrale, un ingombro studiato sulle dimensioni di carico di veicoli standard.

I modelli della serie PLUS 110 sono costruiti totalmente in alluminio, perciò l'integrità strutturale è assicurata da elementi saldati.

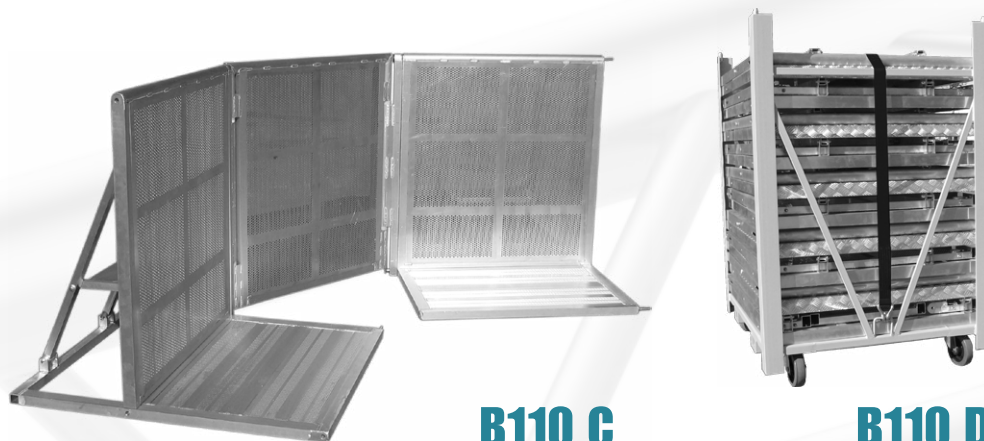
La barriera PLUS 110 nasce per i grandi eventi. **Le parole d'ordine sono: sicurezza, robustezza e risparmio!**

### Technical Information

*The new model is an upgrade of the basic crowd barrier released in the past years. The Crowd Barrier PLUS is 1,10 m wide: this way the user would need to buy less items to reach a certain final dimension and 1,10 m is thought to precisely fulfil the space of a truck.*

*The Crowd Barrier PLUS model is totally aluminium made. In this way the components are all welded.*

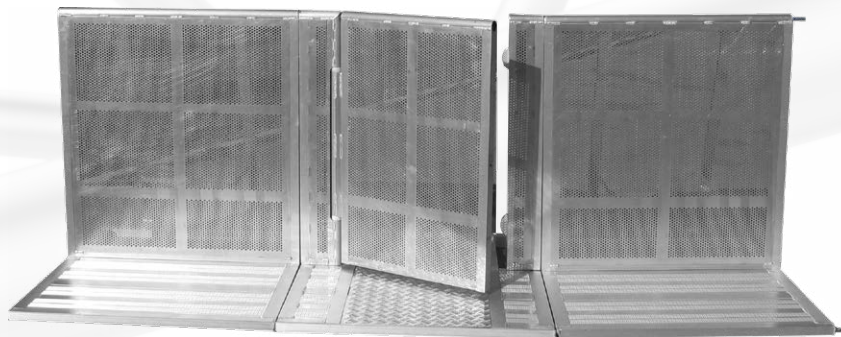
*This is a product for big events. **Keywords are safety, strength and money saving!***



**B110 C**



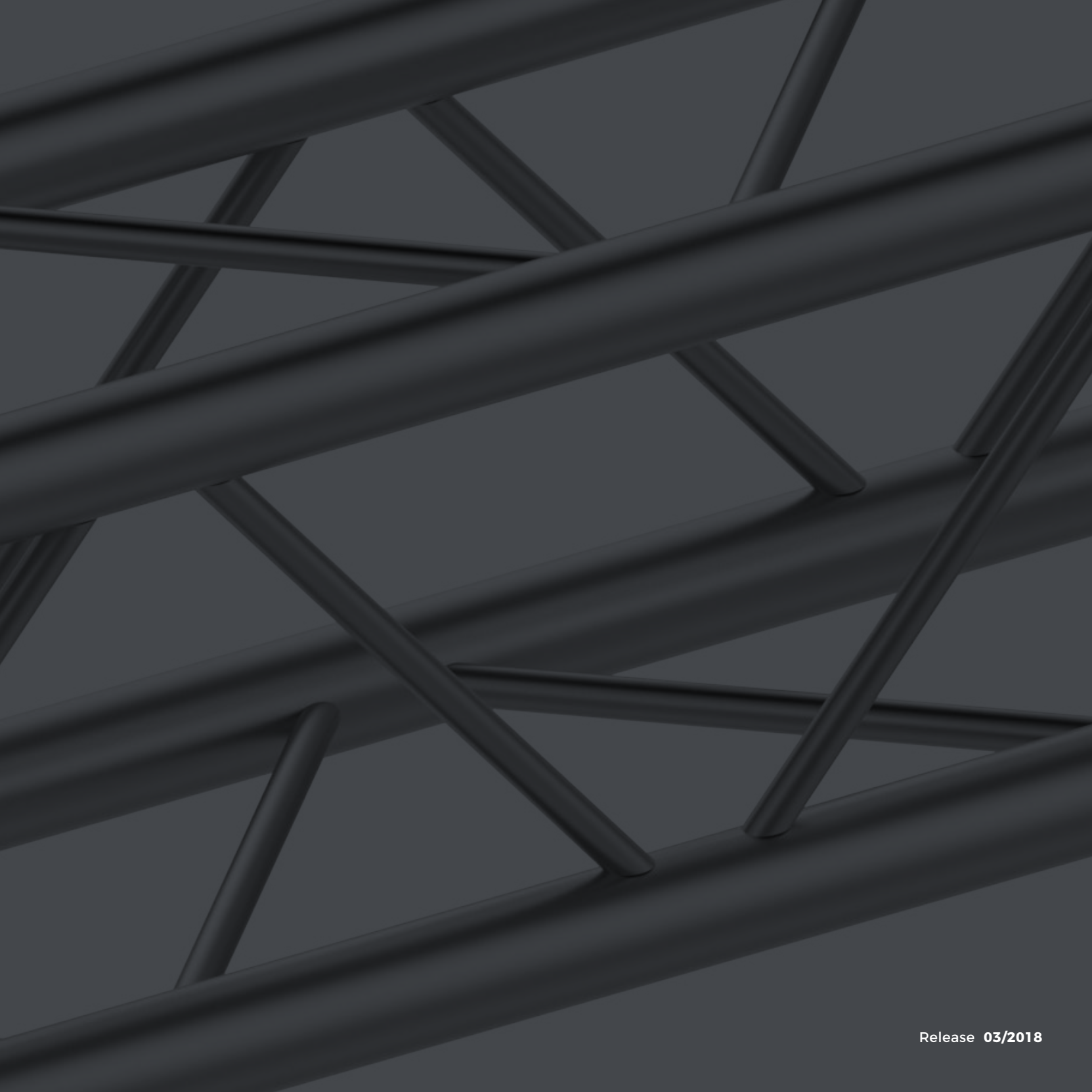
**B110 D**



**B110 G**



**B110 S**



**unirig**

Via F.lli Lumière, 15 | 47122 Forlì - FC - Italy

**T** +39 0543 783578 | **F** +39 0543 783550 | [info@unirig.it](mailto:info@unirig.it)

**[www.unirig.it](http://www.unirig.it)**