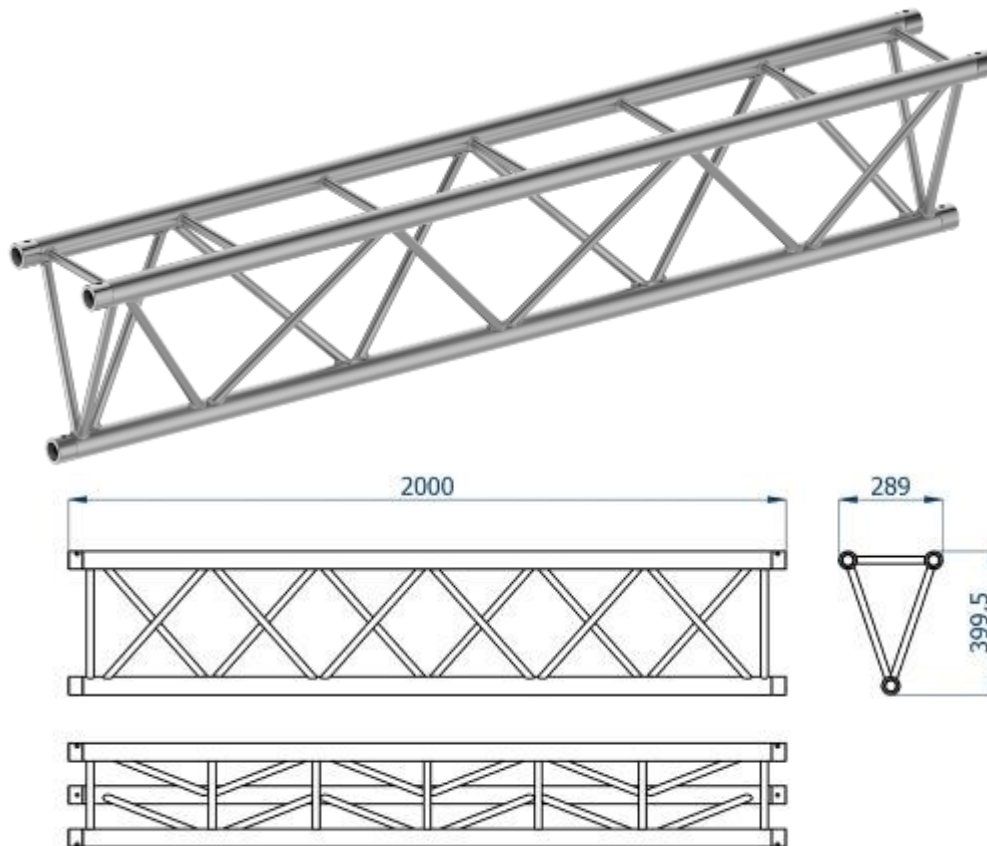


# B40I

Isosceles triangular truss 29x40cm, *bushing connection for conical spigots*

Traliccio isoscele sezione 29x40cm, *connessione a boccia per giunto conico*


**STRAIGHTS - LINEARI**

B40I 050	L= 100cm
B40I 100	L= 100cm
B40I 150	L= 150cm
B40I 200	L= 200cm
B40I 250	L= 250cm
B40I 300	L= 300cm
B40I 350	L= 350cm
B40I 400	L= 400cm
BT KS	(coupling set)

**SPAN**

Lenght [m]	UDL [kg/m]	Defl. [cm]	CPL [kg]	Defl. [cm]
3	565	0,5	845	0,5
4	315	1	630	1
5	200	1,5	500	1,5
6	140	2,5	415	2
7	100	3	350	2,5
8	80	4	305	3,5
9	60	5	265	4
10	50	6,5	235	5
11	40	7,5	210	6,5
12	35	9	190	7,5
13	30	10,5	170	9
14	25	12,5	155	10,5
15	20	14,5	140	12
16	20	16,5	125	13,5
17	15	18,5	115	15,5
18	15	20,5	105	17,5

*Upper Tubes - Tubi Correnti:* EN AW-6082 T6 Ø50x2mm

*Bottom Tubes - Tubi Correnti:* EN AW-6082 T6 Ø50x3mm

*Diagonals - Diagonali:* EN AW-6082 T6 Ø20x2mm

*Bushings - Boccole:* EN AW-6082 T6

*Coupling Set - Set di connessione:*



UDL, Uniformly Distributed Load - CPL, Centred Point Load - Defl., Deflection

